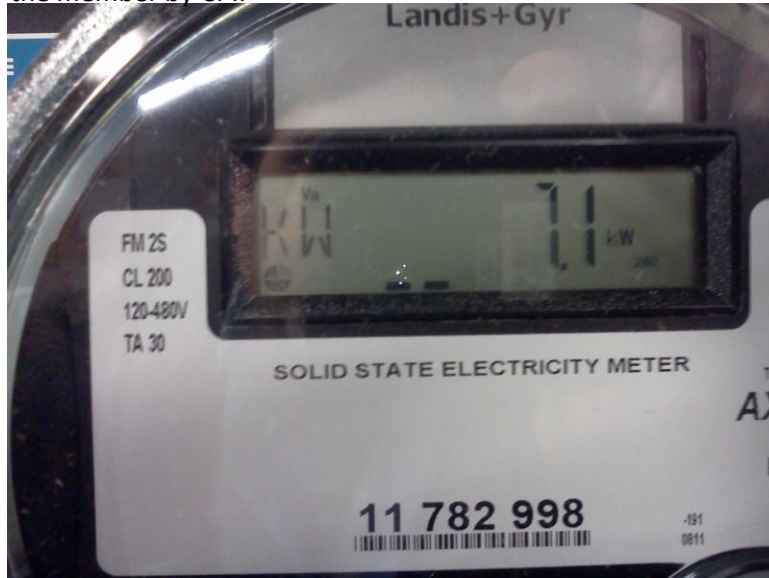


The meter will display “DEL” on the left hand side of the LCD display to indicate the cumulative amount of energy supplied to the member by CPI. The meter will display “REC” on the left hand side of the LCD display to indicate the cumulative amount of excess energy that has been generated by the member and returned to CPI’s power grid. This is not the total amount of energy generated by the member but only the remainder of the generated power after the member energy needs have been met.

“KW” display indicating 7100 watts of power being supplied to the member by CPI.



“KW” display indicating 7100 Watts of excess power being returned to the power grid by the member.



The meter indicates “KW” on the left hand side of the LCD display to provide an immediate indication of how much power is being delivered to the member or excess power being supplied by the member to the power grid. When energy is being provided to the member from the power grid the “KW” value will be positive. When energy is being returned to the power grid from the member the “KW” value will be negative.